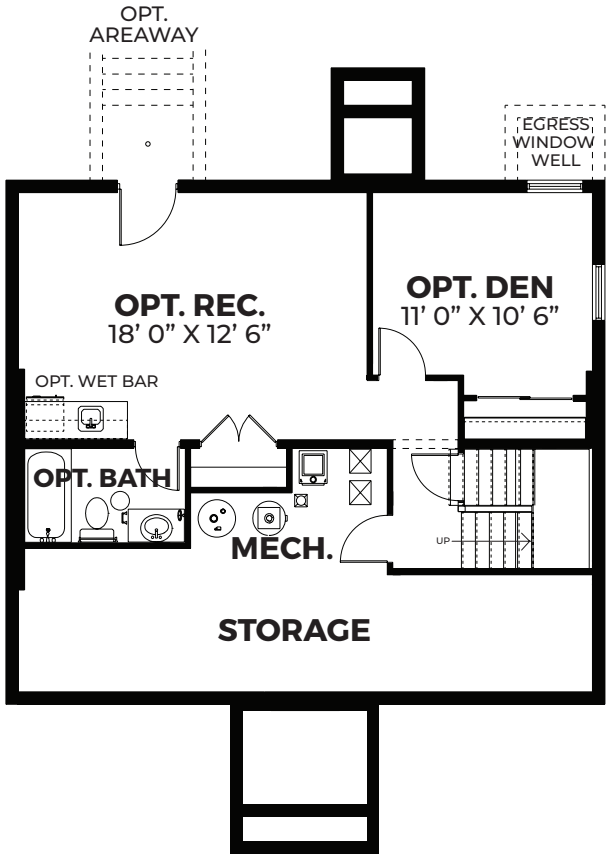
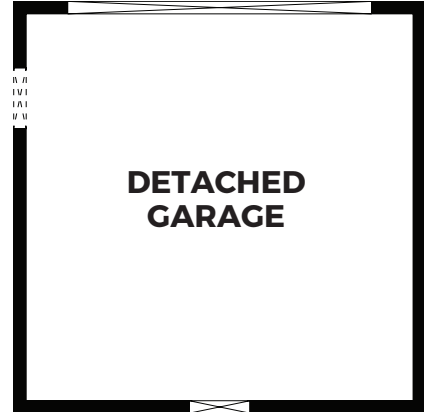


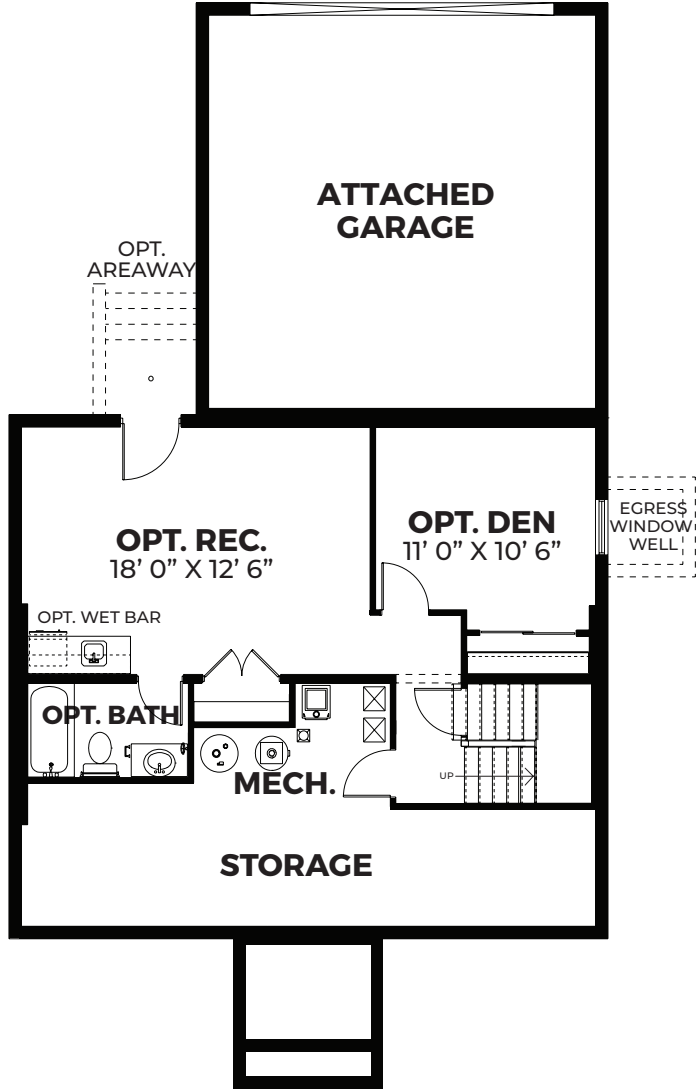


The Jackson

3 Bedrooms | 2 Bathrooms | 2-Car Garage | 1,800+ SF



Opt. Finished Foundation Plan with Detached Garage



Opt. Finished Foundation Plan with Attached Garage

FOUNDATION



CRAFTSMAN WITH GABLE, 3/4 PORCH AND STONE TO GRADE



CRAFTSMAN WITH DORMERS, PORTICO AND STONE TO GRADE



EASTERN SEABOARD WITH 3/4 PORCH, DORMERS, SHUTTERS AND STONE TO GRADE



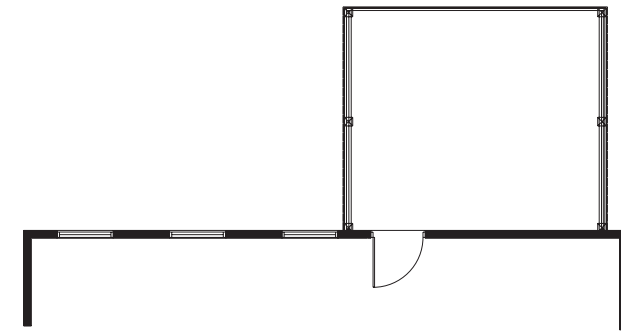
CRAFTSMAN WITH GABLE, FULL PORCH AND STONE TO GRADE

ATLANTIC BUILDERS

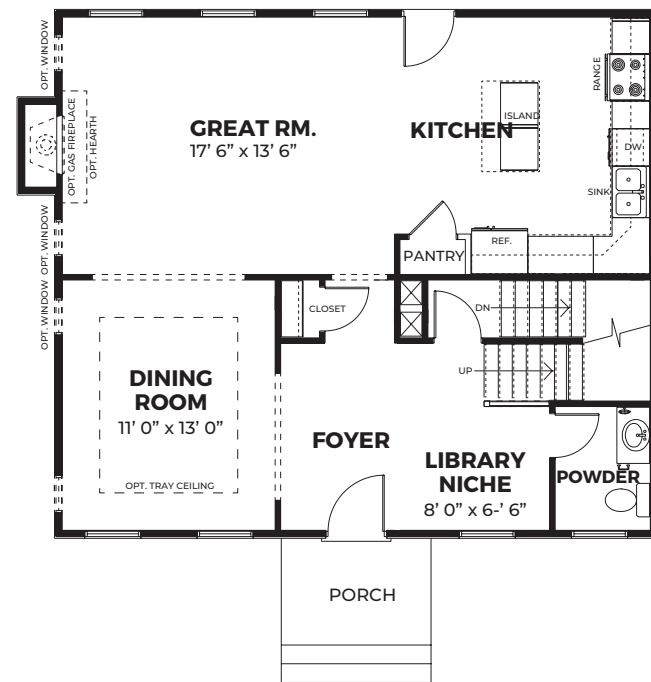
ATLANTICBUILDERS.COM

*These renderings and floorplans are conceptual only. Actual details may vary. This insert is for illustrative purposes only. Atlantic Builders' continuing research and development program means specifications and plans are subject to change without notice. Standard features vary per community. Please consult Community Sales Manager for details.

BASE PRICE	
HOMESITE NUMBER	
HOMESITE PREMIUM	
OPTIONS	
TOTAL	

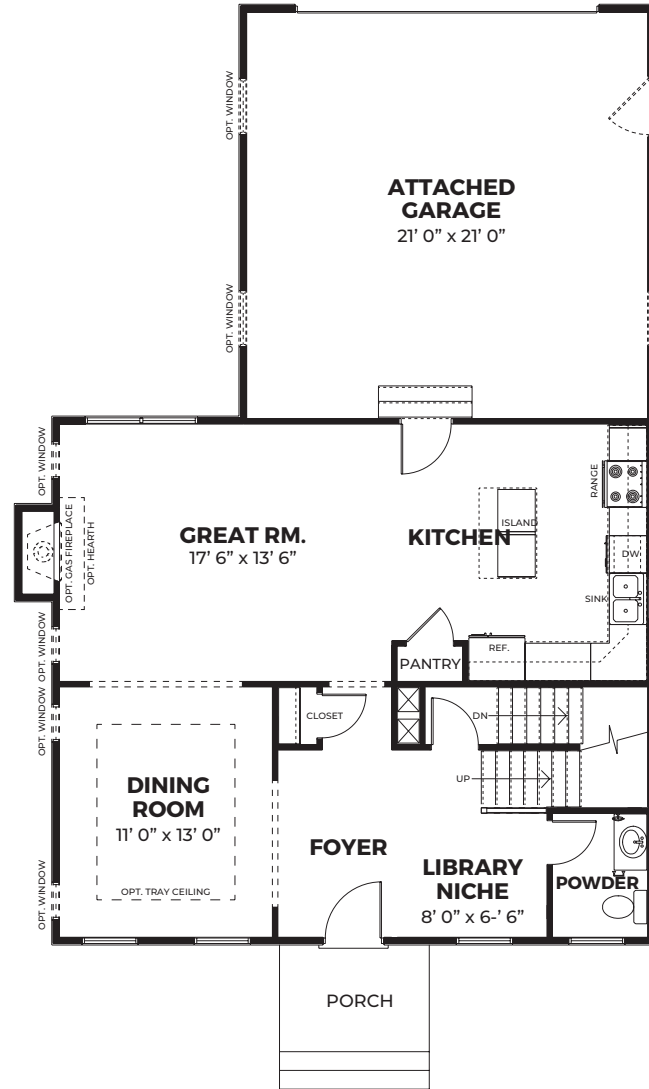


Optional Screened Porch



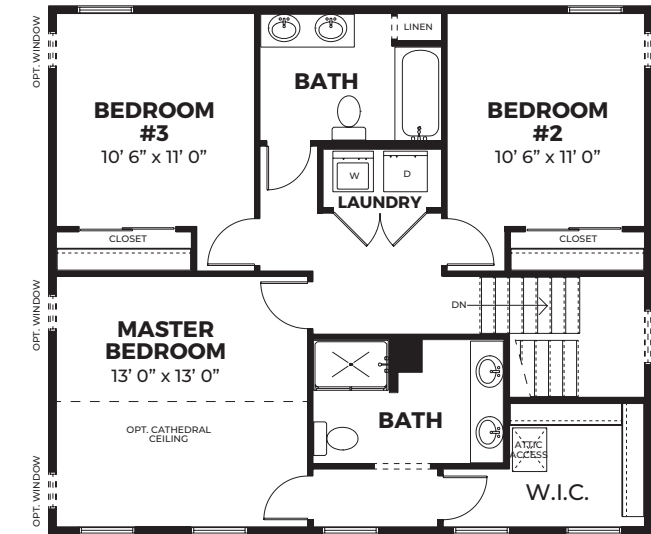
First Floor Plan with Detached Garage

MAIN LEVEL



First Floor Plan with Attached Garage

MAIN LEVEL OPTIONS



UPPER LEVEL